



Apartment 5, Robinson House, Market Street, Shrewsbury, SY1 1LE
£1,300 Per Month



Apartment 5, Robinson House, Market Street, Shrewsbury, SY1 1LE

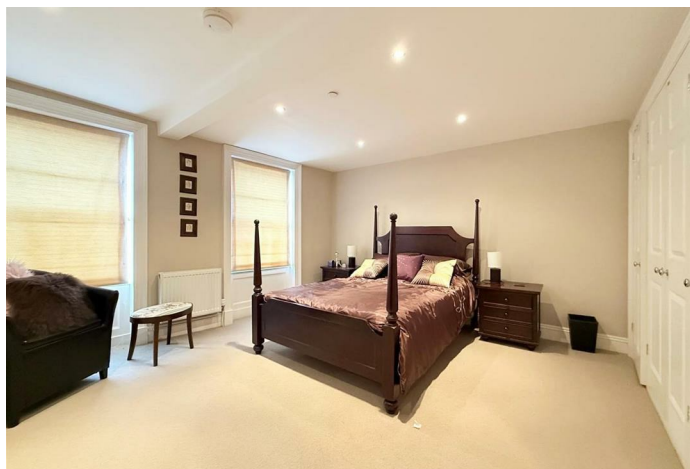
£1,300 Per Month

Beautifully presented and individual two bedroom FURNISHED duplex apartment forming part of the top floor of a very attractive Grade II Listed building dating back to 1729 overlooking the historic market square, in the heart of Shrewsbury town centre. Offers thoughtfully designed accommodation finished to a high standard throughout.

Available: Immediately

Description

- * Magnificent communal entrance hall and original staircase to light and airy landing areas.
 - * Spacious private entrance hall with built in storage and cloakroom.
 - * Impressive semi open plan kitchen/dining area and living room with windows to 2 elevations and lovely views overlooking the market square.
 - * Well fitted kitchen with tiled flooring and integrated appliances.
 - * Large main bedroom with fitted wardrobes and an en suite shower room.
 - * Double doors from entrance hall to a secondary hallway with feature turning staircase to the large first floor landing and dressing areas with plenty of built in storage.
 - * On the first floor there is also a second double bedroom and an impressive bathroom.
 - * Gas fired central heating and a combination of single and double-glazed windows.
 - * Possibility of parking nearby by separate negotiation
- EPC C



Furnished

Council Tax Band: D

Available: 18th February 2026

EPC: C

Floor Plans



These particulars, whilst believed to be accurate are set out as a general outline only for guidance and do not constitute any part of an offer or contract. Intending purchasers should not rely on them as statements of representation of fact, but must satisfy themselves by inspection or otherwise as to their accuracy. No person in this firms employment has the authority to make or give any representation or warranty in respect of the property.